



OAKFIELD



Mountfield Road, Eastbourne BN22 9BT

£1,350 Per Calendar Month



Mountfield Road, Eastbourne BN22 9BT

Stylish and move-in ready, this beautifully refurbished two bedroom terraced home is located in a popular area of Eastbourne.

Featuring a bright interior with modern features, a spacious kitchen with ample storage and two generous bedrooms, and a sleek shower room, the property makes a beautiful, fresh home in a convenient location

Outside offers a low-maintenance private garden, with on-street parkin.

Close to local amenities, schools, and transport links, this home combines comfort, convenience, and contemporary style.

Please note:
An annual house hold income of £42,000 per anum
The tenancy will begin with a 12 month initial term





Kitchen

9'6" x 15'8" (2.9 x 4.8)

Living Room

11'1" x 10'9" (3.4 x 3.3)

Bedroom One

8'6" x 10'5" (2.6 x 3.2)

Bedroom Two

10'9" x 10'5" (3.3 x 3.2)

Shower Room

6'10" x 5'2" (2.1 x 1.6)

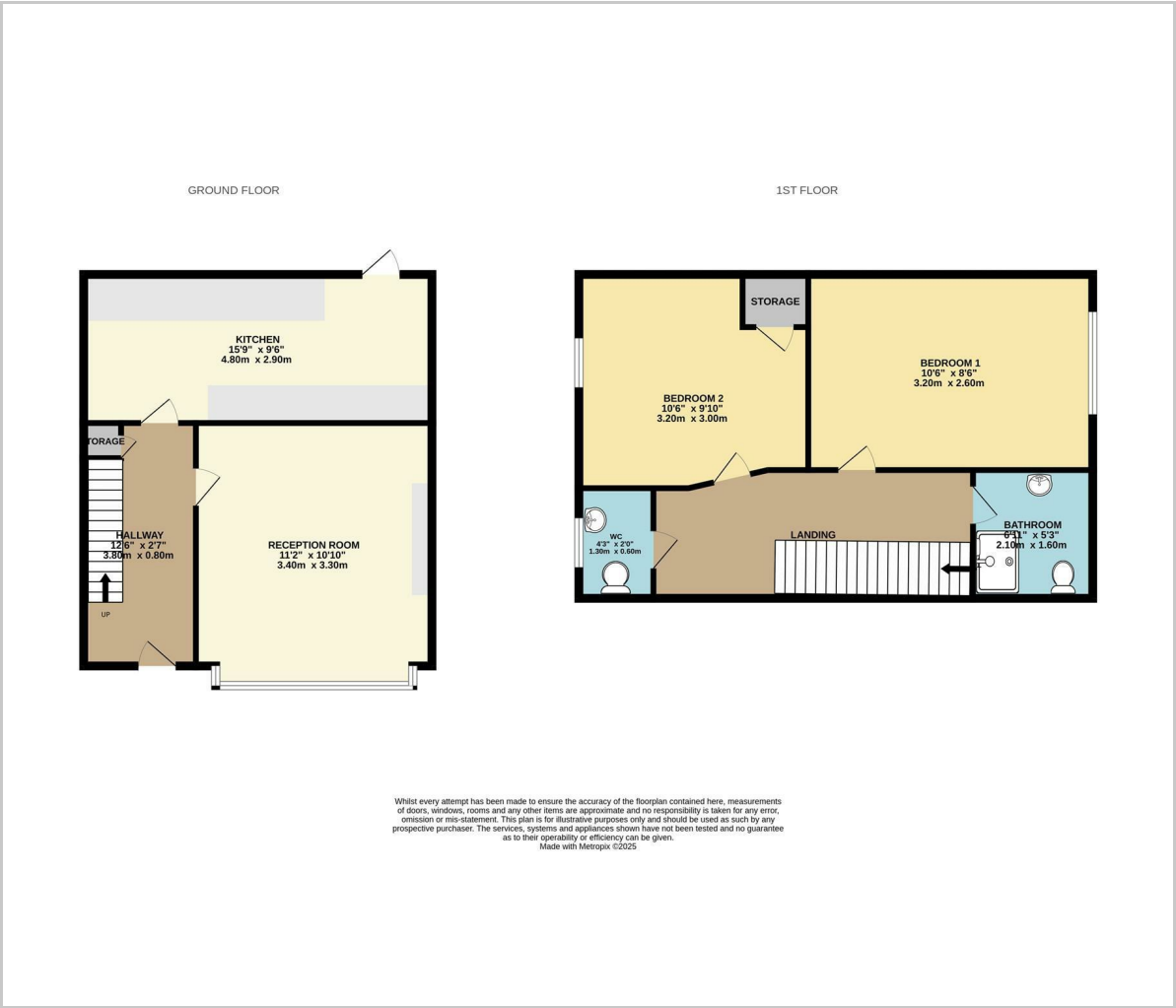
W/C

1'11" x 4'3" (0.6 x 1.3)

Council Tax Band B - £1794.93 per anum



Floor Plan

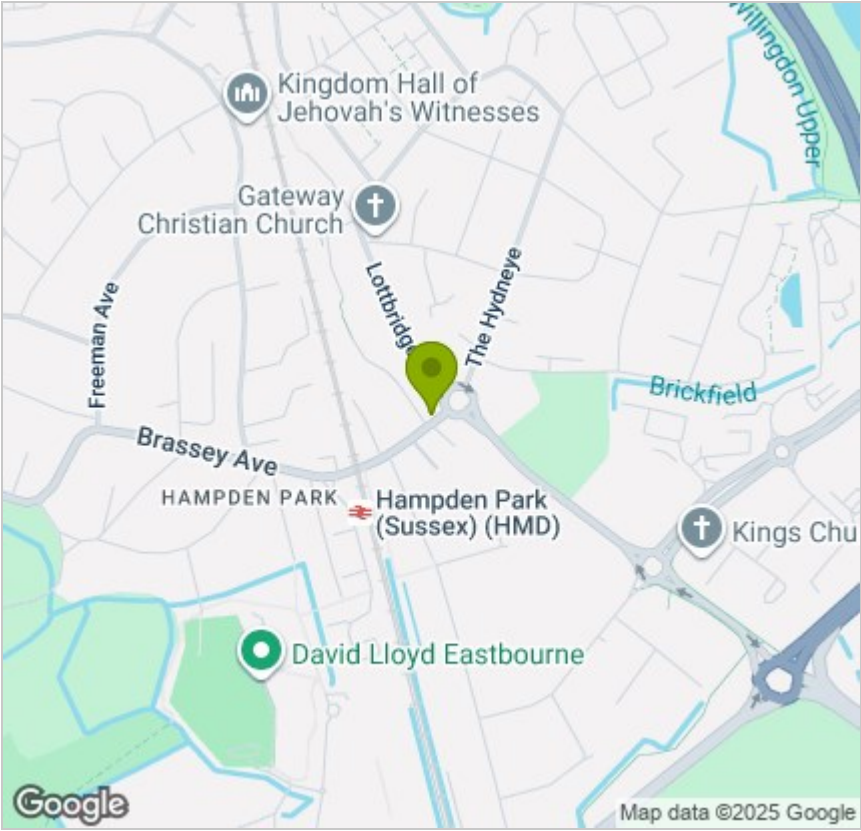


Viewing

Please contact us on 01323 405553 if you wish to arrange a viewing appointment for this property or require further information.

These particulars, whilst believed to be accurate are set out as a general outline only for guidance and do not constitute any part of an offer or contract. Intending purchasers should not rely on them as statements of representation of fact, but must satisfy themselves by inspection or otherwise as to their accuracy. No person in this firms employment has the authority to make or give any representation or warranty in respect of the property.

Area Map



Energy Efficiency Graph

